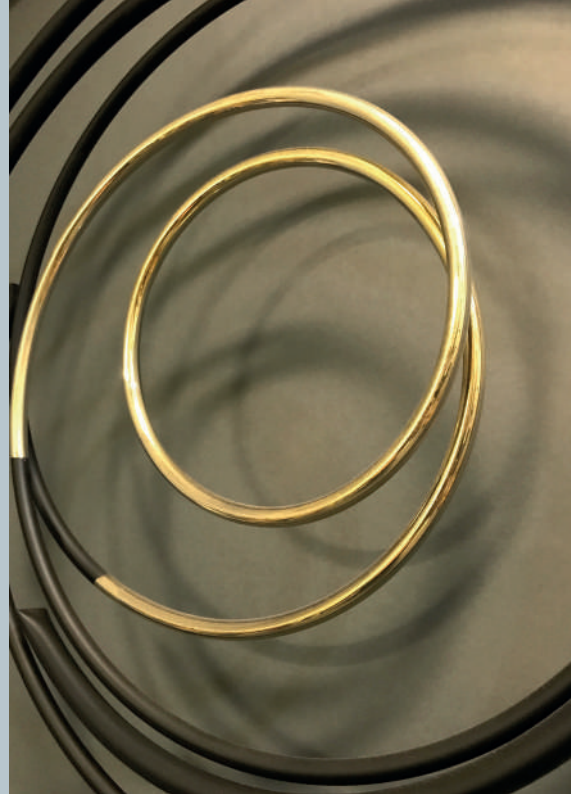
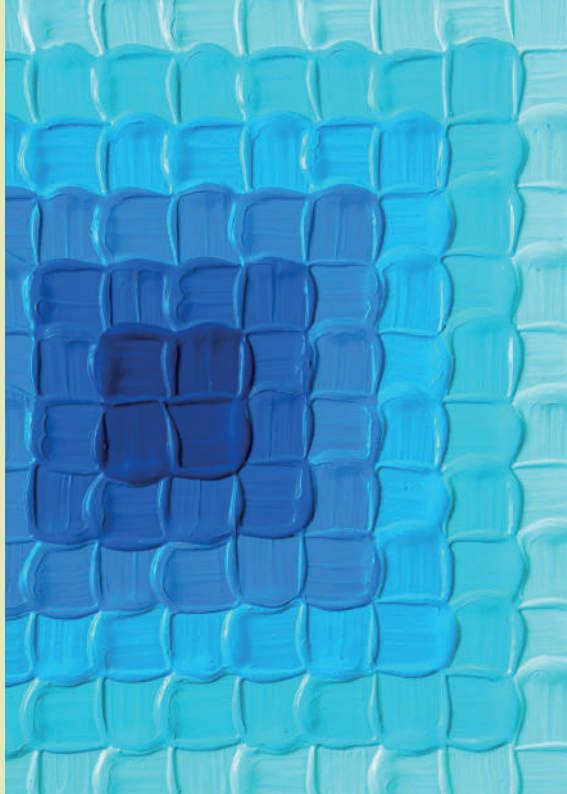




ART
COLLECTION
2025



MONDRIAN
IBIZA



We are all made of stars



ABOUT THE ART COLLECTION

Inspired by Ibiza's dynamic energy, Mondrian Ibiza art collection embodies the island's vibrant culture, natural beauty, rich textures, and adventurous spirit.

Each piece was thoughtfully chosen to create a distinctive and inspiring atmosphere that captures the very essence of Ibiza: The moon, the sun, the sea, the rocks, and the people.

From London to Ibiza, Gone Rogue curators have crafted some pieces of the collection with their unique style and vision.

'ASH' BY CORINE VAN VOORBERGEN

Materials

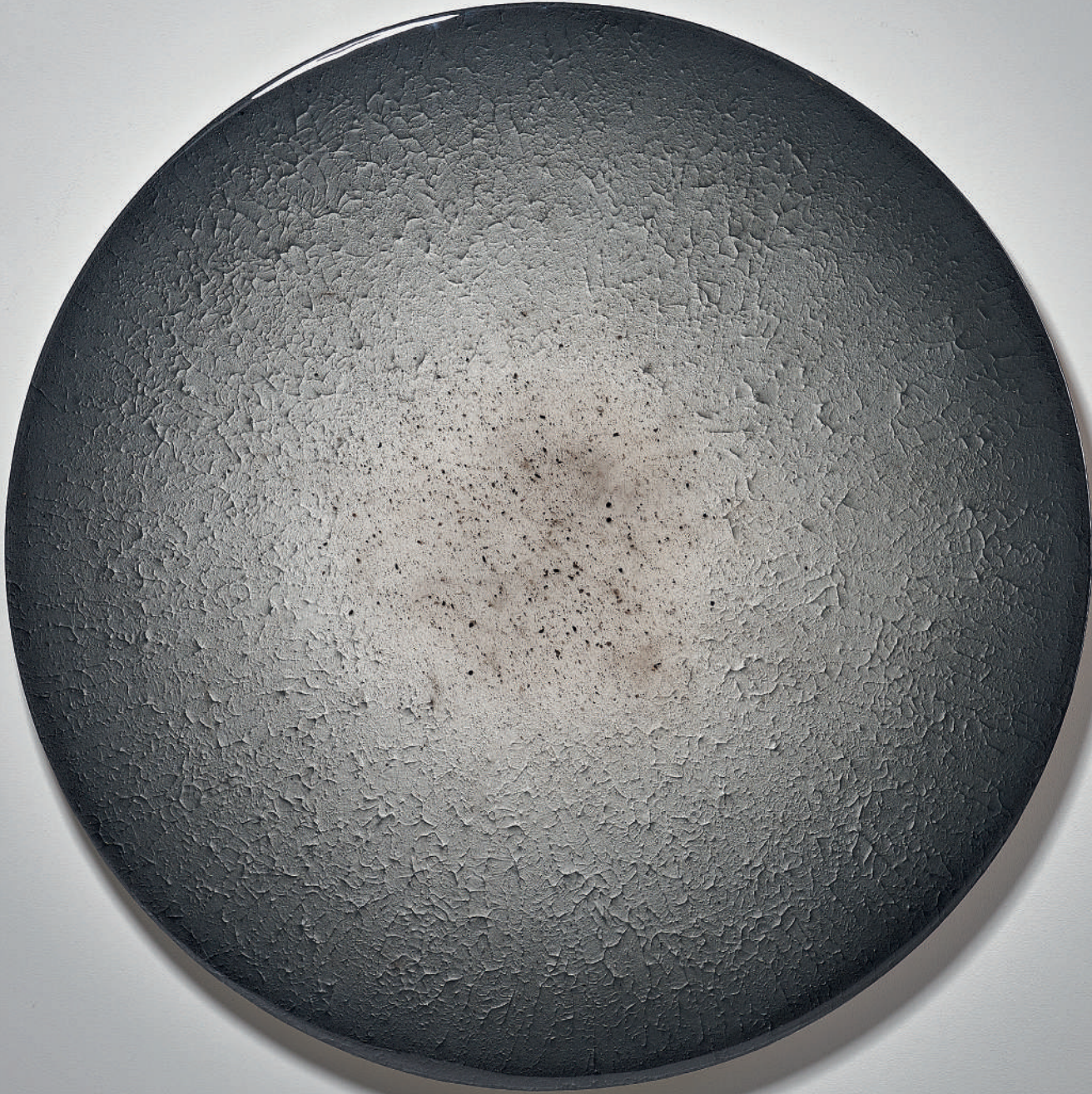
Brass, wood, pigments & resin.

120 × 120cm

From Fire to Ash

This piece symbolises the outcome, almost like a relic of the intense passion that came before. This is never the end, as from ash comes new life.

Copyright The Artist



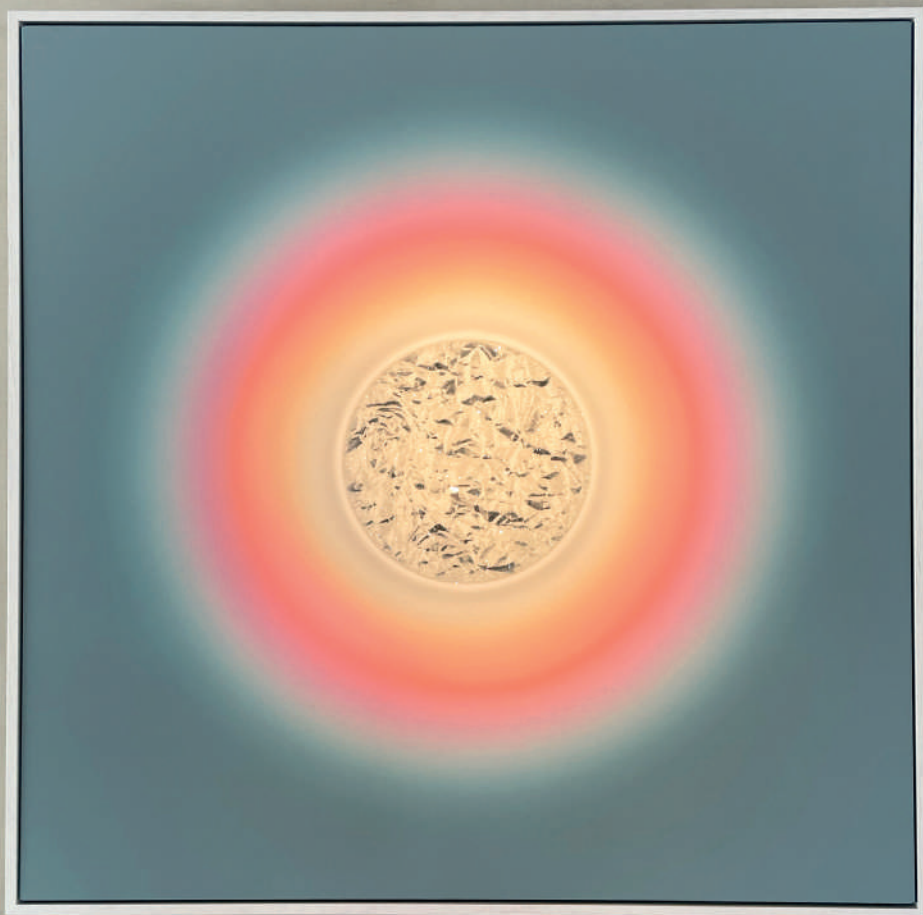


ABOUT THE ARTIST

Corine Van Voorbergen is an intuitive artist. Through her minimalistic round art forms she focuses on the idea of eternal movement. In her current series “Through the Brass Eye of the Beholder” she evokes a certain feeling in the viewer through her use of colour, visual depth and natural flow.

Corine constructs her art pieces with layers and layers of different mediums and finishes the work off with a thin layer of epoxy. The epoxy reflects the surroundings back to the beholder.

“Art and Interior Design should compliment each other.” From this perspective Corine moves herself through both fields, presenting her work at Art Fairs, in Galleries and at Interior Design events around the world.



KISSING OF THE
SUN & THE MOON

'KISSING OF THE SUN & THE MOON' BY LAUREN BAKER

Materials

Ink with hand-embellished diamond dust on fine canvas.
In white box tray frame.

100 × 100cm

Framed: 105.5 × 105.5 × 4cm

Edition of 10

Kissing of the Sun & the Moon

Copyright The Artist



'REMNANTS OF STARS' BY LAUREN BAKER

Materials

White neon on canvas with diamond dust in deep box tray frame.

H75 x W150 x D5 cm

Edition of 6

Remnants of Stars

Remnants of Stars is a standout piece in Baker's artwork, where she incorporates diamond dust to convey uplifting mantras that remind us of our place in the universe and our bond with nature. Through these impactful and encouraging typographic artworks, Baker seeks to elevate the vibration of love and connection.

Copyright The Artist





‘EARTH SYMBOLS, TEXTILE WALL HANGINGS’ BY LAUREN BAKER

Materials

Mixed media, cotton twill, pineapple leather, coconut leather, recycled plastic, recycled lurex yarn, organic cotton yarn, mohair yarn, upcycled feather yarn.

190cm x 90cm x 2cm

Earth Symbols, Textile Wall Hangings

Copyright The ArtistW

ABOUT THE ARTIST

Lauren Baker is a British contemporary multidisciplinary artist who exhibits internationally. Her work explores symbolism, higher realms of consciousness, and communing with nature and the elements. Lauren's signature light works exude energy through her celestial chakra artworks, offering glimpses into higher realms of consciousness. A sense of emergence and connection with something beyond our immediate world pulsates throughout her work, expressing the "secrets of the universe."

Deeply passionate about environmental issues and sustainability, Lauren aims to elevate the vibration of love and connection in the world through her art. She currently has three artworks on display at Mondrian Ibiza, further enhancing the space with her unique vision.



ELEVATOR LANDING AREA

‘GOLD IN BLACK’ BY MARK BEATTIE

Materials

Acrylic on Glass.

24ct gold plated copper and painted copper.

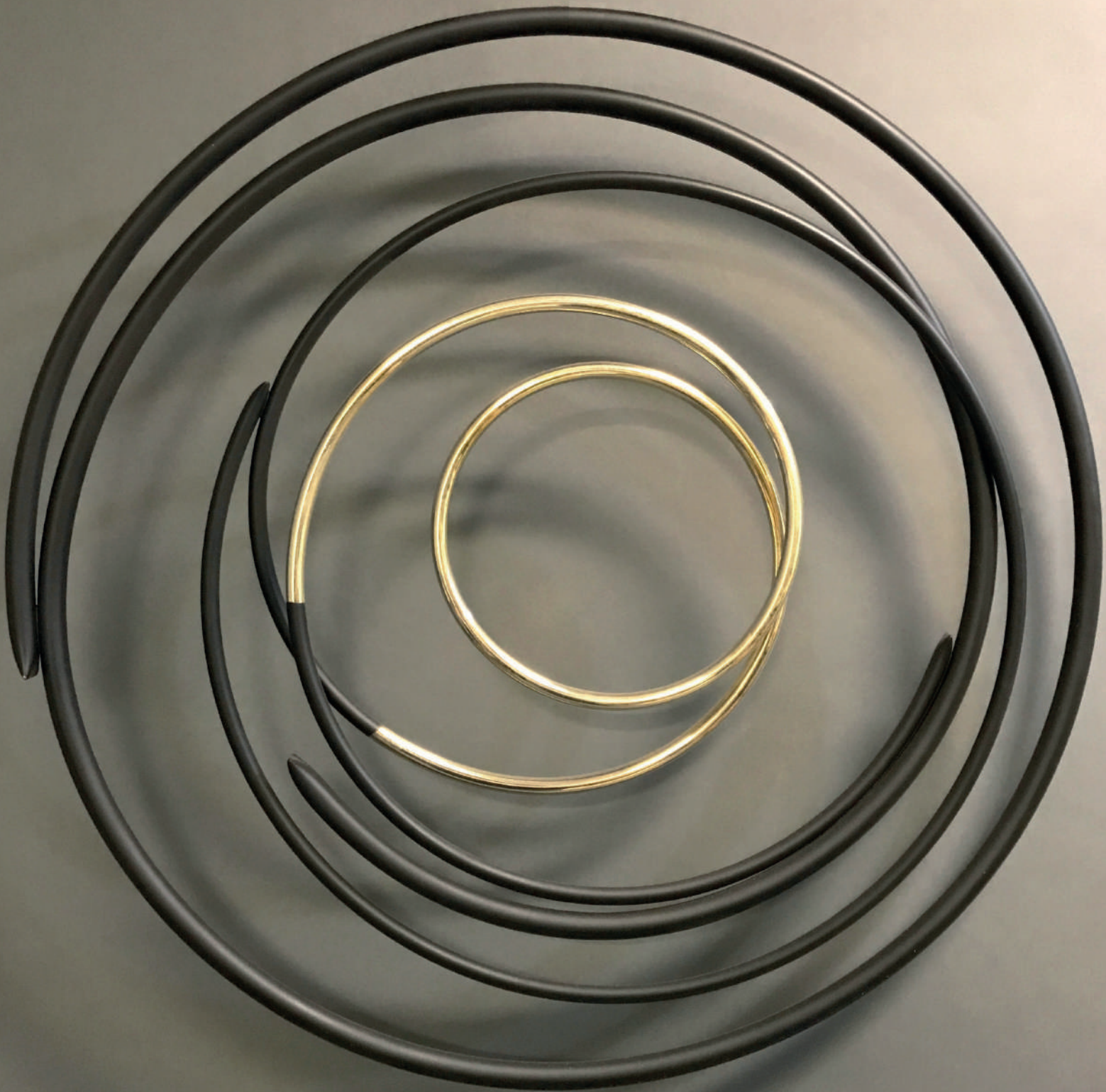
60cm Width x 60cm Height

Gold in Black

Copyright The Artist

ART COLLECTION







ABOUT THE ARTIST

Mark creates abstract sculptures using various metals and ranging in size from miniature to monumental. Each sculpture is unique and finished in a way that is sensitive to the material. He has developed a signature style through which his sculptures contain movement and fluidity. Mark has recently started using neon which works in harmony with his metalwork and has added a sense of energy to his practice.

As Mark works with metal, he is exploring the properties of the material. He is often contrasting finishes; morphing from the pure/unblemished to the rusted/antiqued appearance or the bright fluorescent against the matte black. He has recently started to break out of the spherical to create spirals and towers that still pursue the poetry of free-flowing curves and maintain the harmonious balance of form and space.

‘OCEAN VIEW’ BY HANNAH NIJSTEN

Materials

Acrylic on Glass.

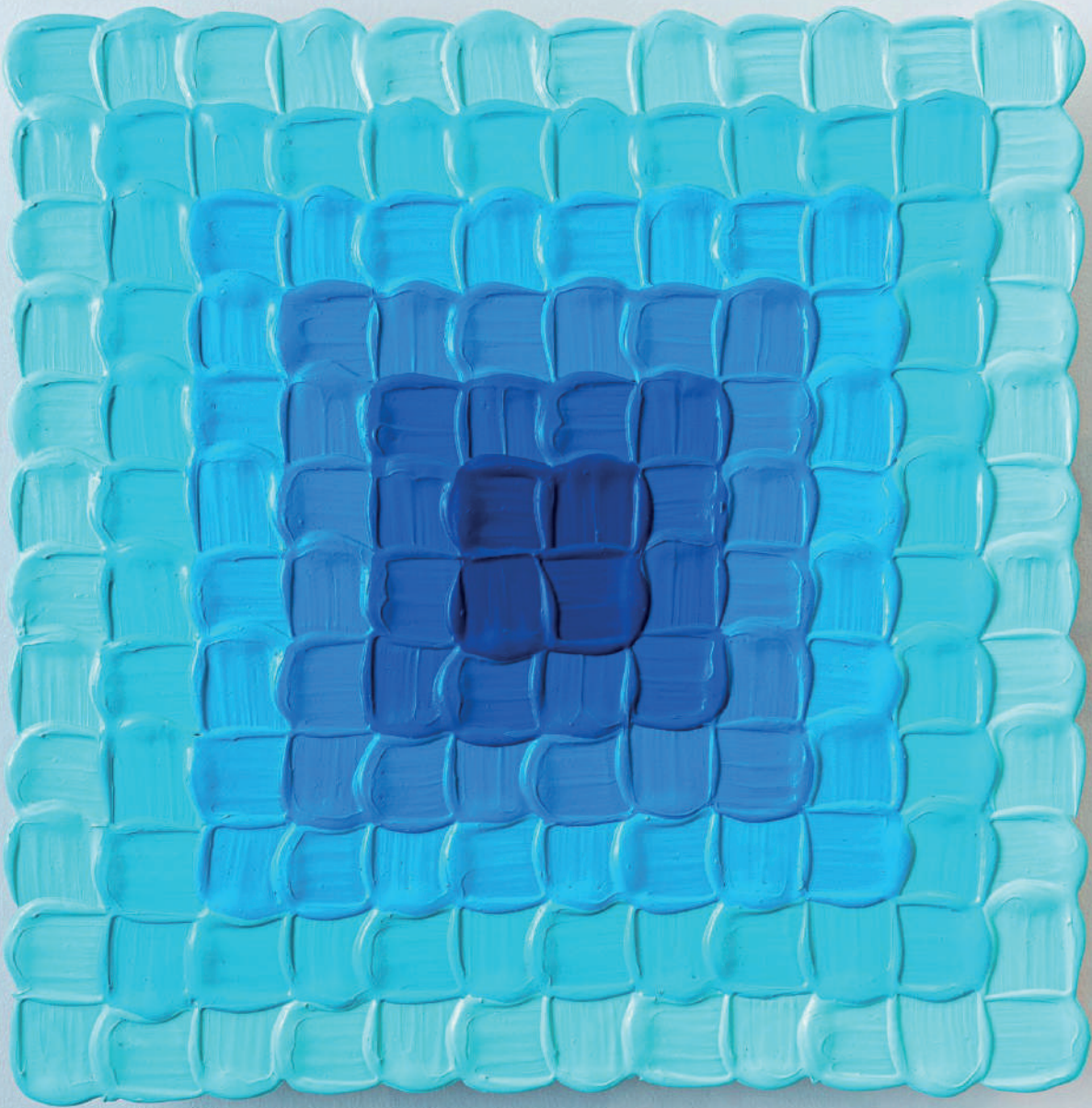
100cm Width x 100cm Height

Ocean View

Just like when you book a room with an ‘ocean view’ Hannah wanted to bring the ocean to your home with this floating artwork. An artwork as a window.

Copyright The Artist



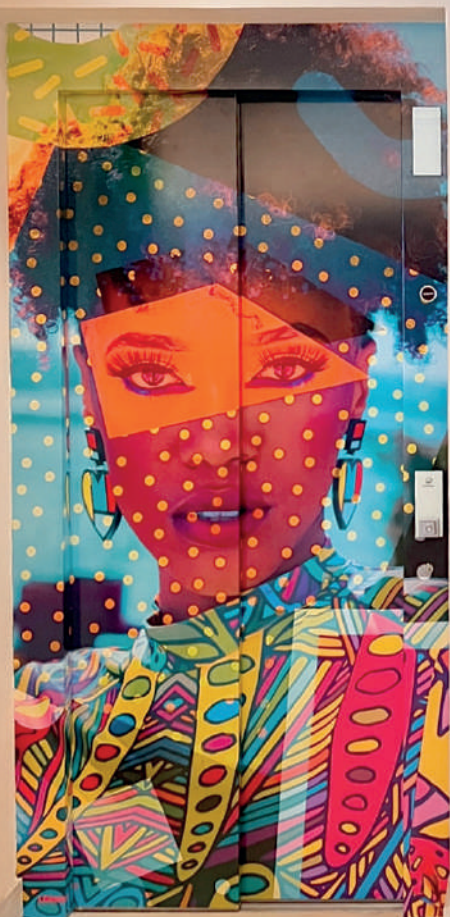




ABOUT THE ARTIST

Hannah Nijsten is a British artist who has carved a niche for herself in the art world with her one-of-a-kind square style of painting. Her approach to painting is not just about creating a visual spectacle, but also about exploring new techniques that add depth to her work both physically and metaphorically.

In her past collections, Hannah has brought together abstract and portraiture in a way that is truly unique. Her stand-alone pieces are powerful and yet calming at the same time, inviting viewers to pause and immerse themselves in the world she has created.



‘CUBAN FLOW ART INSTALLATION’ BY JORDI GÓMEZ

Step inside Hyde’s bold vision, where Jordi Gómez’s Cuban Flow collection transforms elevator journeys into immersive, high-energy experiences. This dynamic installation channels the vibrant essence of Cuba —its textures, rhythms, and soul—through a modern, avant-garde lens.

Every surface pulses with a kaleidoscope of color and movement, blending Gómez’s contemporary artistry with Cuba’s timeless allure. These elevator galleries are not just a passage; they’re an explosion of creativity, inviting guests to feel, dream, and connect with the cultural heartbeat of Cuba.

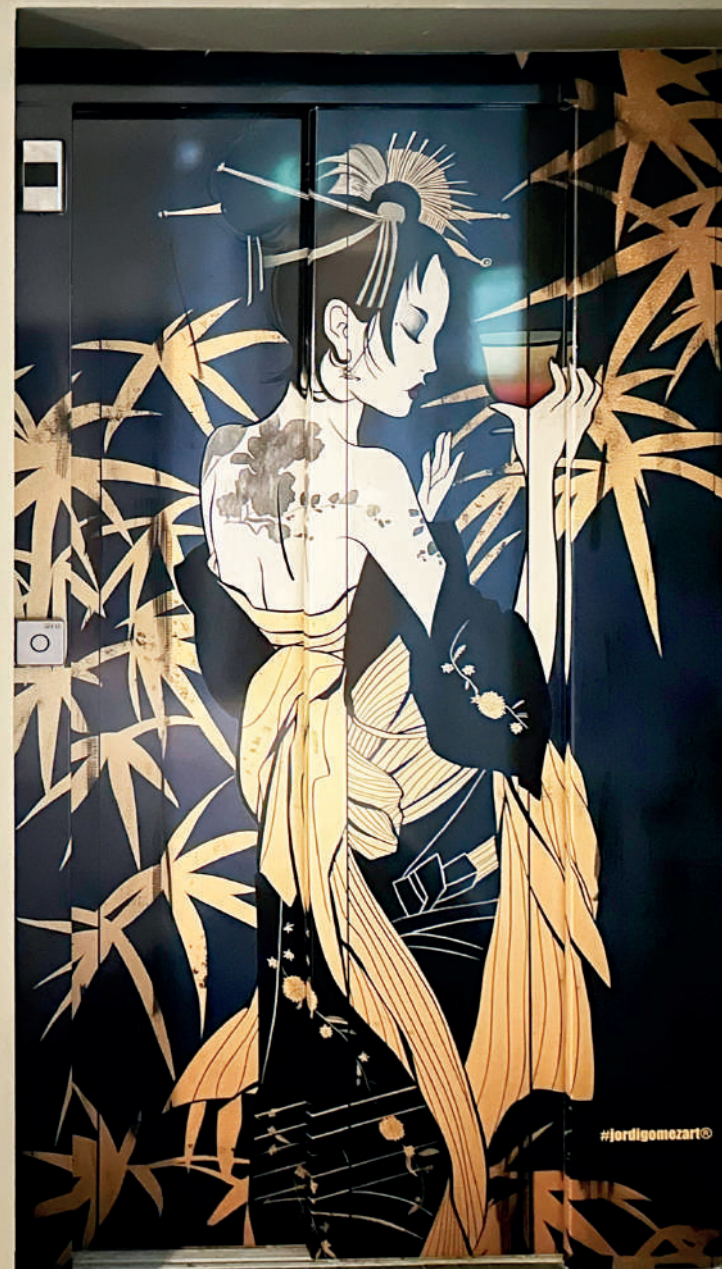
At Hyde, even the smallest spaces leave the boldest impressions.

‘HANAMI ART INSTALLATION’ BY JORDI GÓMEZ

The Mondrian Ibiza elevators become a canvas for Jordi Gómez’s artistic journey, part of the mesmerizing Hanami Collection. Inspired by a transformative two-month exploration of Japan, Gómez masterfully captures the delicate interplay between tradition and modernity.

From the serene elegance of geishas, sumo wrestlers, bamboo groves, and ancient temples to the electric pulse of manga, neon-lit cityscapes, and pop culture, this installation celebrates the contrasts that define Japan. Each piece tells a story, immersing guests in a world of cultural richness and vibrant contrasts. This installation complements the ethos of Niko,

Mondrian Ibiza’s understated Japanese dining destination, where timeless traditions meet avant-garde creativity. Step into the elevators and embark on a visual journey that reflects the Mondrian spirit—bold, innovative, and unforgettable.



ABOUT THE ARTIST

Jordi Gómez is a multidisciplinary artist based in Ibiza, renowned for his striking photographic cocktail of glamour, fun, and sex appeal, presented in his signature glossy style.

Born in the tranquil village of Caldes de Montbui, Barcelona, in 1978, Gómez has spent the last 25 years exploring the breathtaking beauty and striking contrasts of our planet. Deeply inspired by the art world, his work has been showcased in galleries across the globe, bringing elegance and sophistication to homes, hotels, and restaurants alike.

By seamlessly integrating art and space, Gómez redefines visual storytelling, crafting immersive experiences that challenge traditional boundaries. His unique artistic vision blends photography, design, and cutting-edge technologies, resulting in a captivating dance of creativity that leaves a lasting impression.

